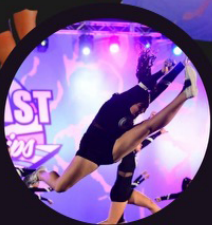
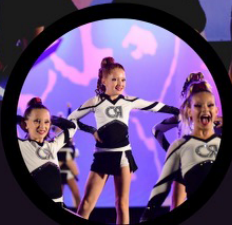
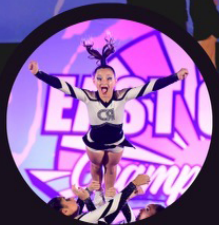


EAST COAST

WE WANT YOU

For Season 2!

JOIN THE REVOLUTION



Evaluation Day 1

May 11

TUMBLING

- 5-6:30 Beginner
- 5-6:30 Ages 4 & 5
- 7-9 Level 1 (Ages 10 & up)

Late Evaluation Dates

- May 15,16, 22,23

Evaluation Day 2

May 12

TUMBLING

- 5-6:30 Level 1 (Ages 6-9)
- 7-9 Level 2,3,4,5

Placement Dates

- May 15th at 6pm
- Late placements 5/29

Evaluation Day 3

May 13

STUNTING

- 11-12 4 & 5 year olds
- 12-5:30 Arrive at time given on previous evaluation day.

Signing/ Sizing Day

May 17

- 5-6:30 ALL prep and Novice
- 6:30-8 Level 1
Tiny, Mini, Youth,
- 8-9 Level 1 Junior & Senior
- 8-9 Levels 2,3,4,5

More Information

www.naplescheerrevolution.com

info@naplescheerrevolution.com